

Saab 9-3 (9440) Key Programming



Introduction:

- This course will show how to program keys and remote controls for Saab 9-3 (9440).
- The programming is done with Tech 2 under the menu Add/Remove.
- Security Access via TIS2WEB is required.
- The remote control is integrated into the key and will be programmed simultaneously.
- The key contains a transponder chip that does not require a battery to operate.
- At least 1 valid key (transponder) must be available.
- All keys must be programmed at the same occasion.
- Max 4 keys can be programmed.
- New keys and keys previously used for this vehicle can be programmed.
- CIM must be replaced if all keys are lost.



Preparation

- Have all keys (new keys and keys previously used for this vehicle) at hand.



- You need to use the CANdi diagnostic interface for Tech 2.



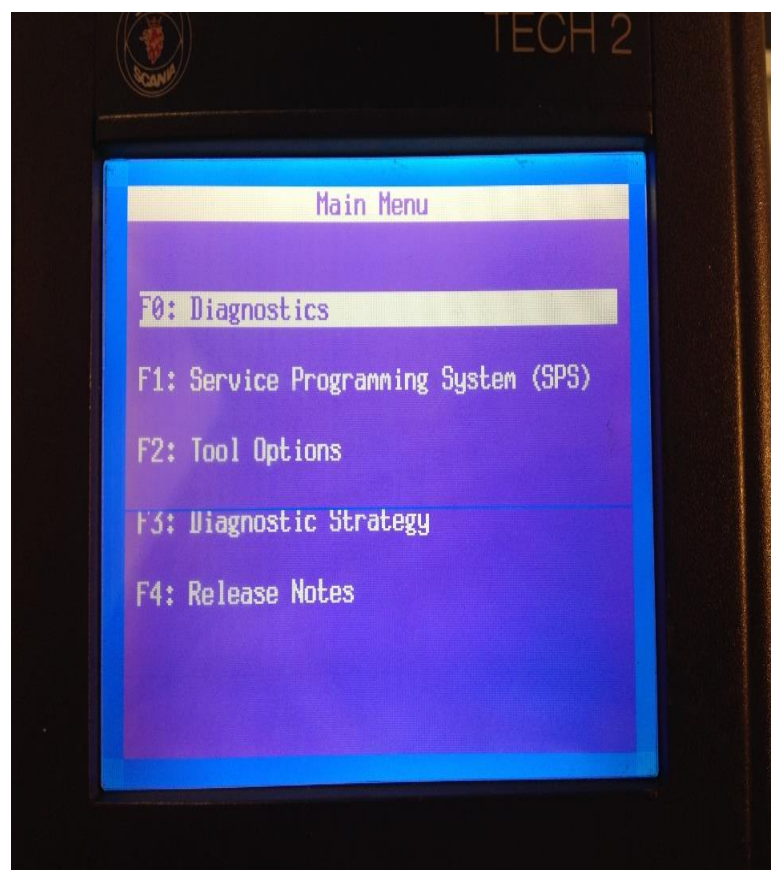
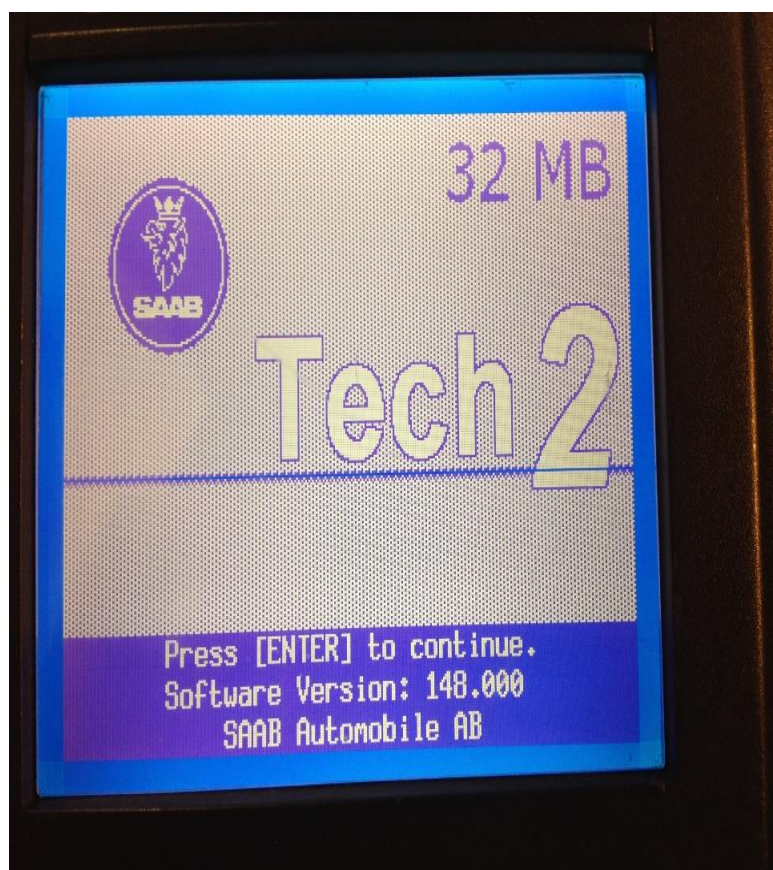
Tech 2 navigation

- Insert the key that can start the car (the valid key) and turn to "ON".
- Connect Tech 2 to the diagnostic connector.



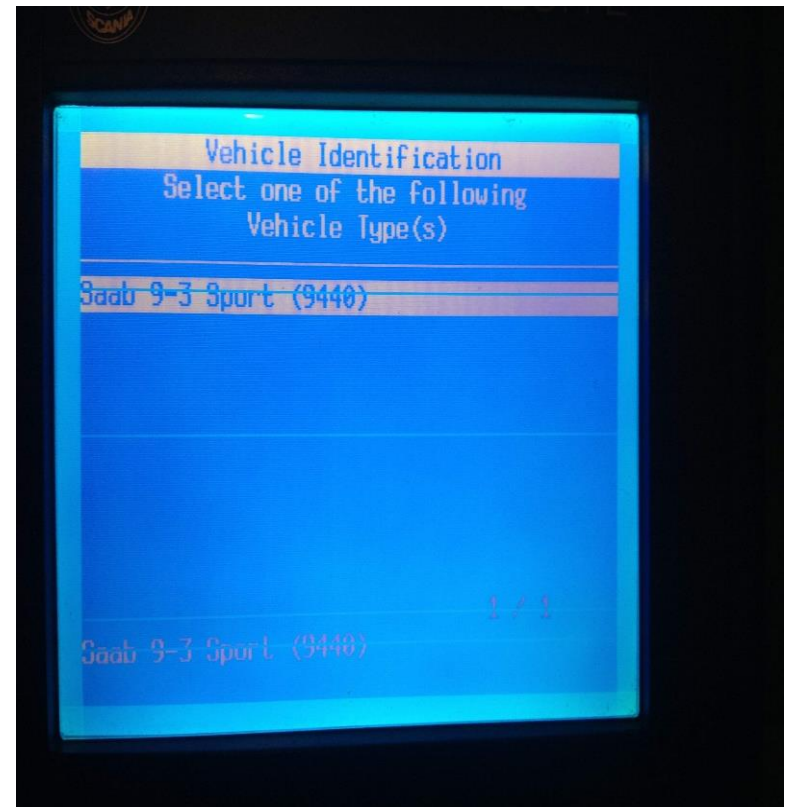
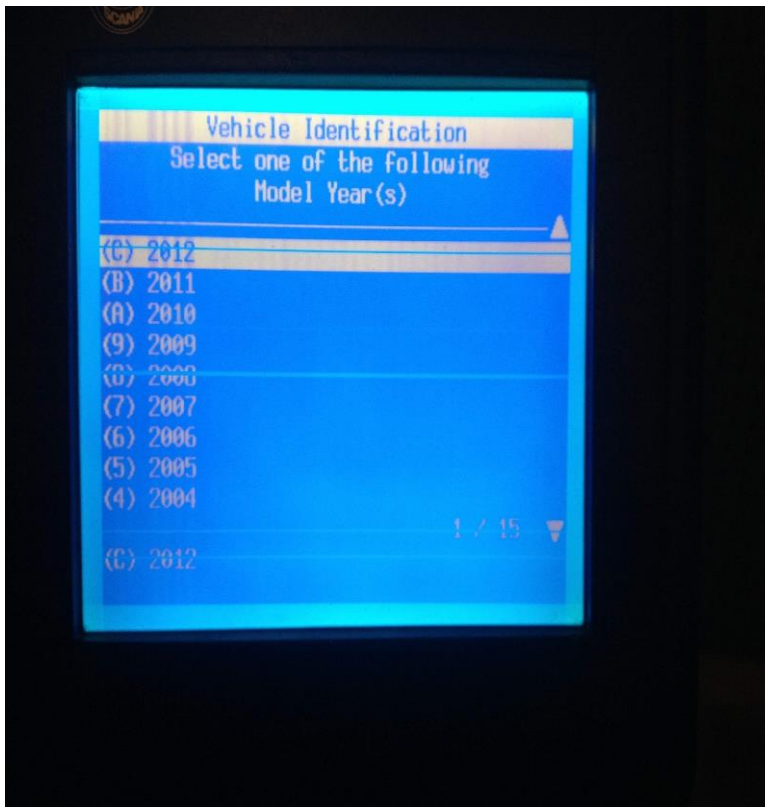
Tech 2 navigation

- Power up Tech 2.
- The memory card software version must be SAAB 148.000.
- Press "ENTER" and select "F0: Diagnostics".



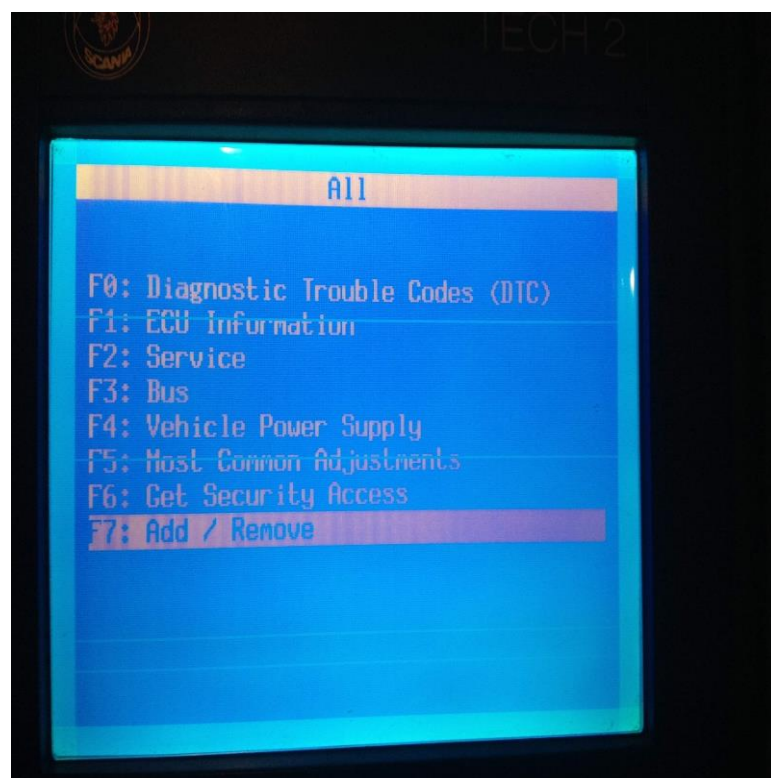
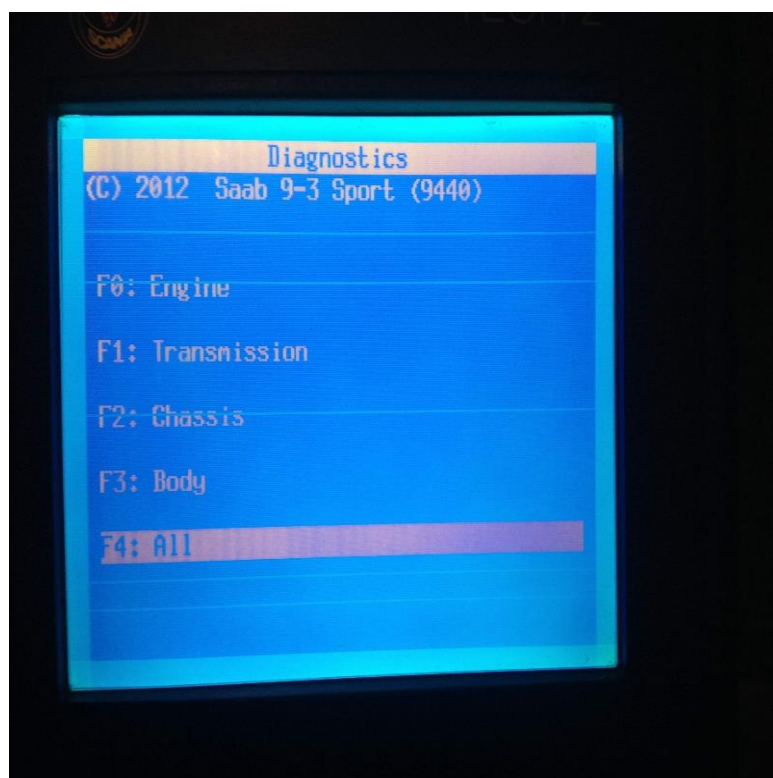
Tech 2 navigation

- Select Model Year.
- Select "SAAB 9-3".



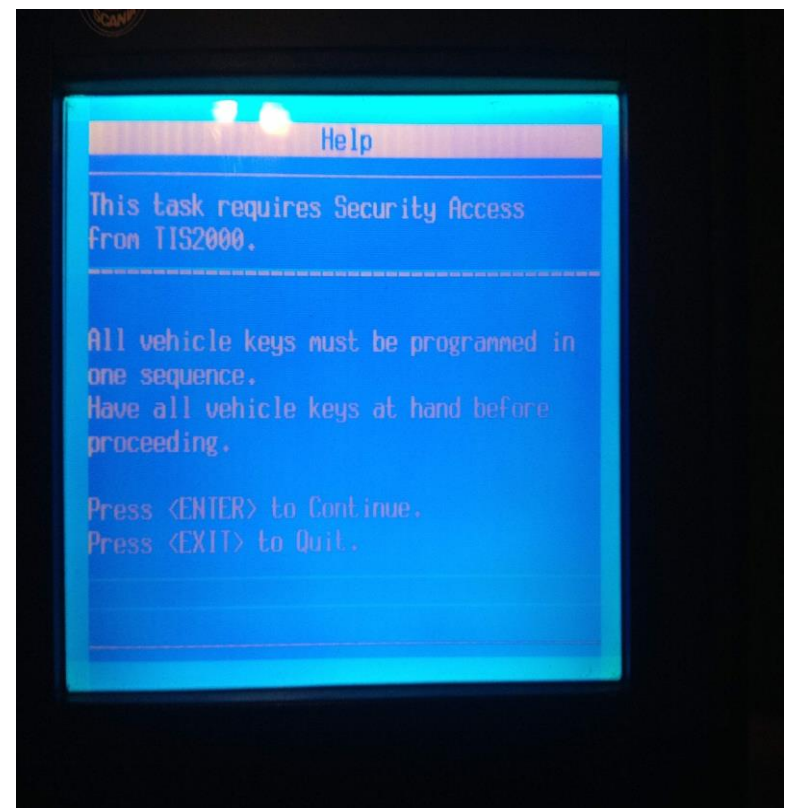
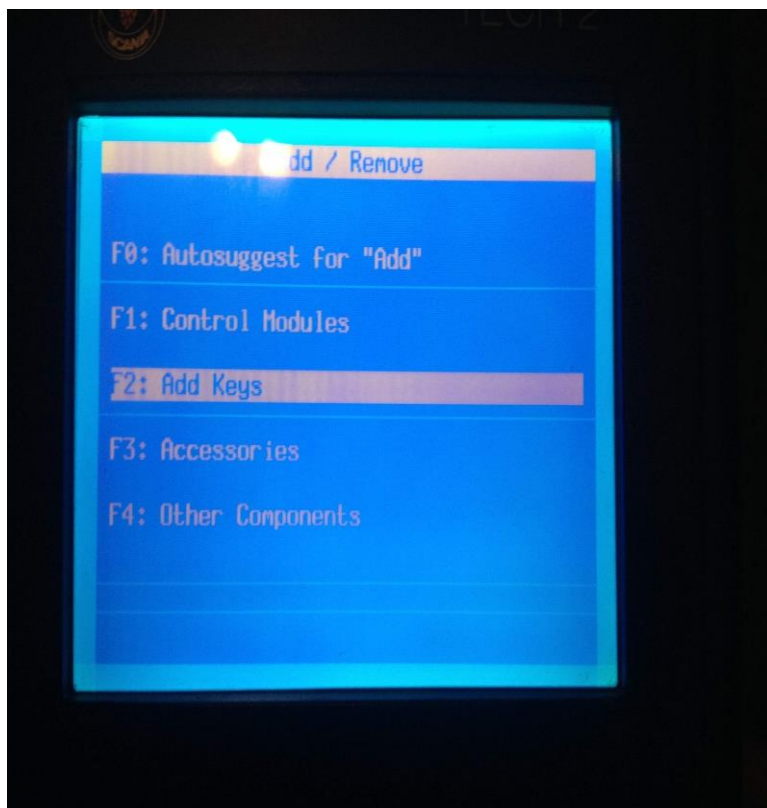
Tech 2 navigation

- Select "F4: All".
- Select "F7: Add / Remove".



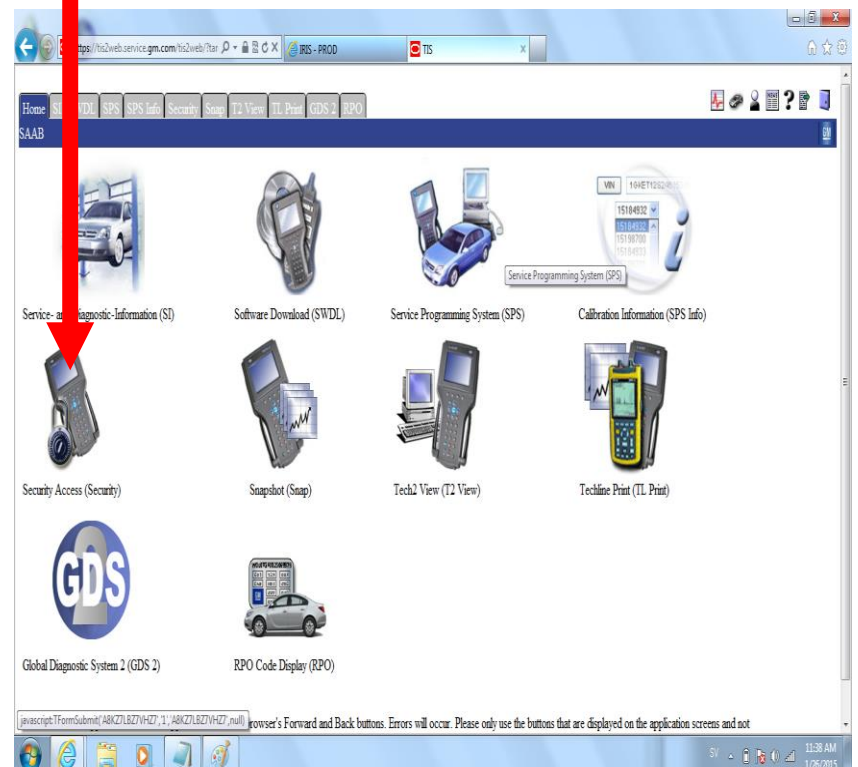
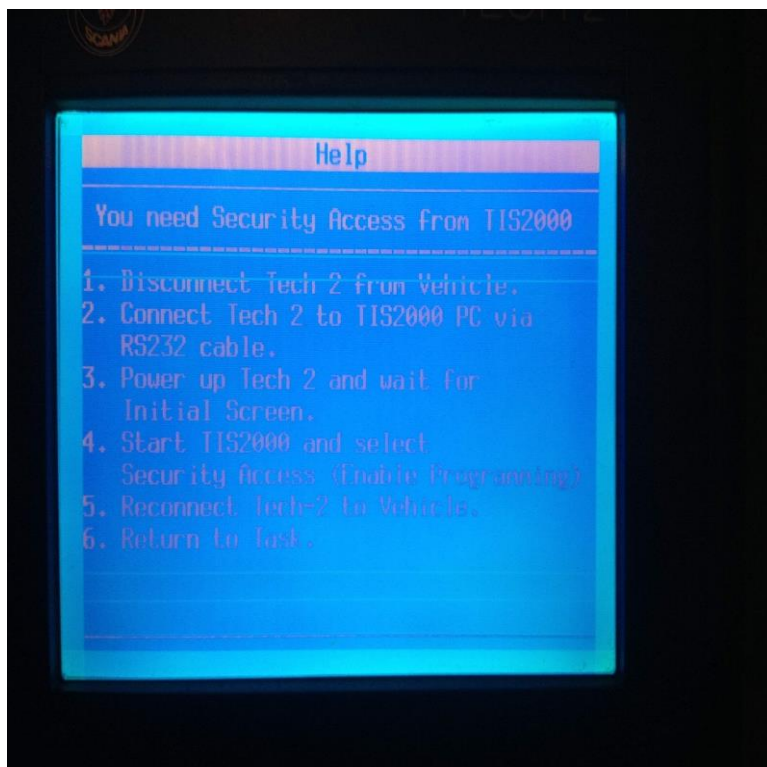
Tech 2 navigation

- Select "F2: Add Keys".
- The text says this task will require Security Access from TIS2WEB and you need all vehicle keys at hand.
- Press "ENTER" to continue.



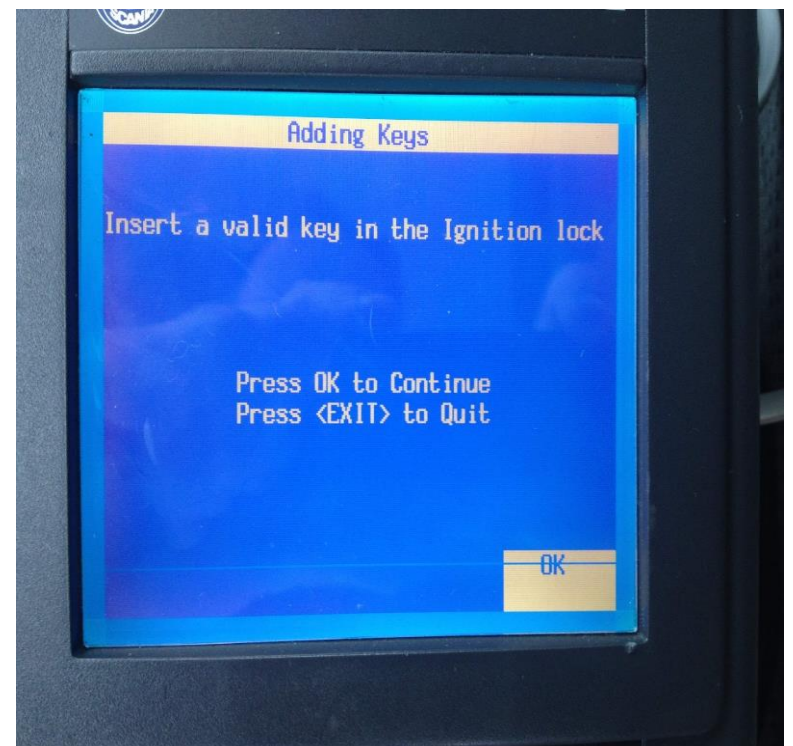
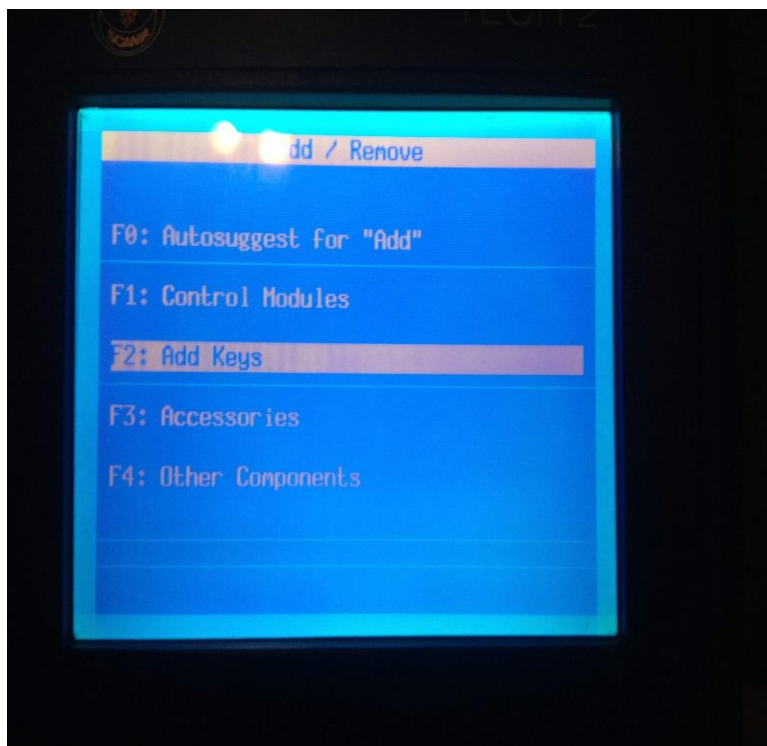
Tech 2 navigation

- Power Tech2 Off and then On to go to the start screen.
- Get Security Access from TIS2WEB.



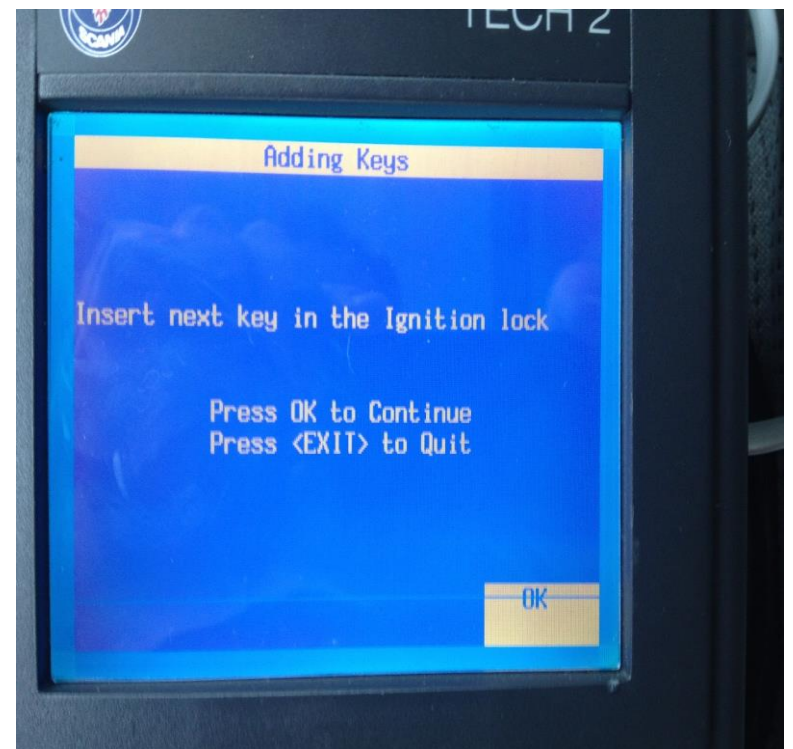
Tech 2 navigation

- Return to task: Select "F2: Add Keys".
- Insert a key that can start the car (a valid key) but do **NOT** turn it.
- Press OK to continue.



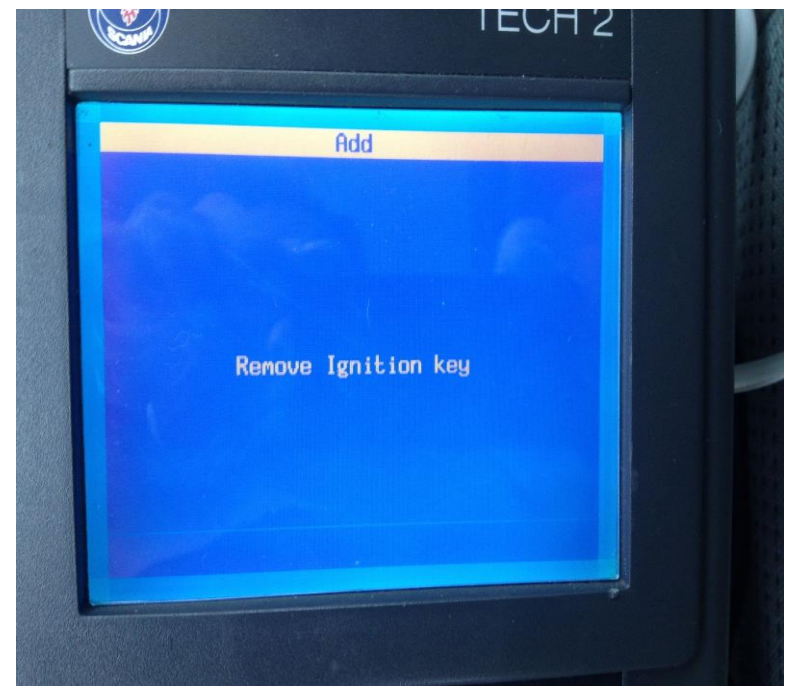
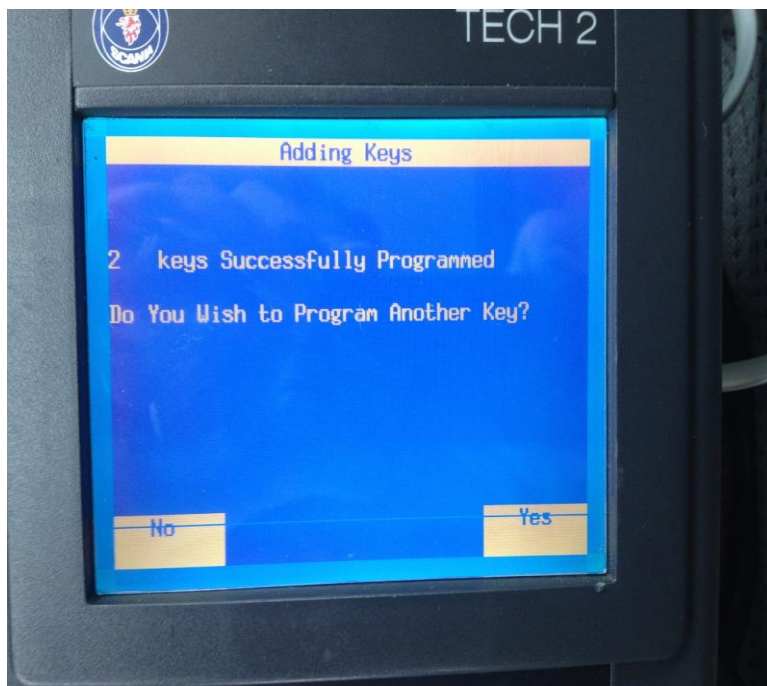
Tech 2 navigation

- Press "Yes" to program the next key.
- Insert next key but do **NOT** turn it.
- Press OK to continue.



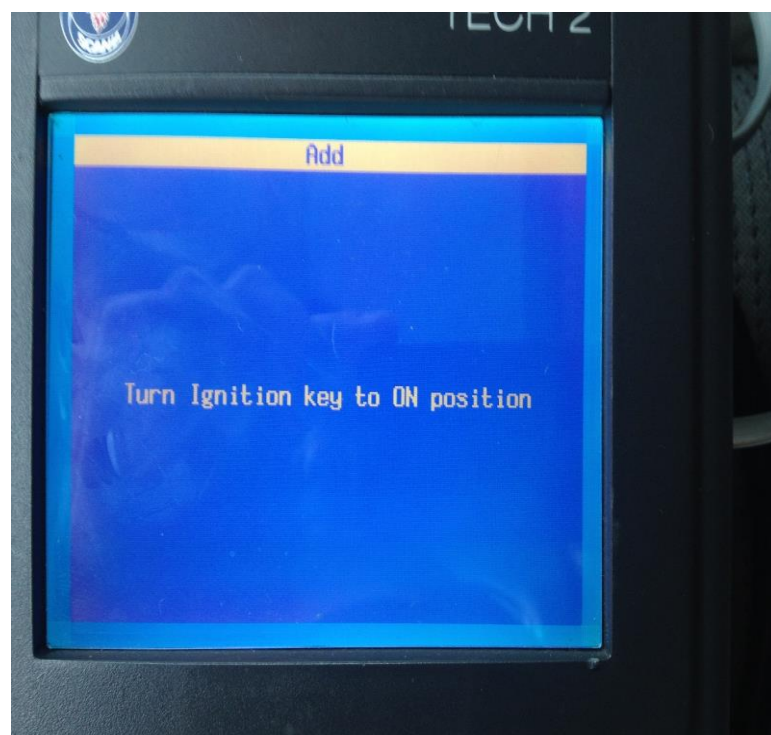
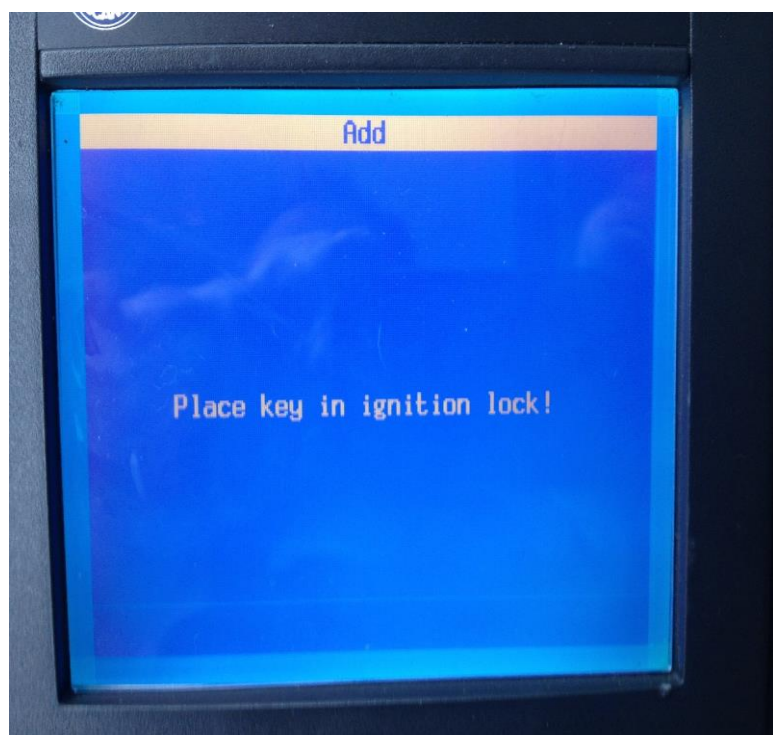
Tech 2 navigation

- Press "No" when all keys are programmed.
- Remove the key.



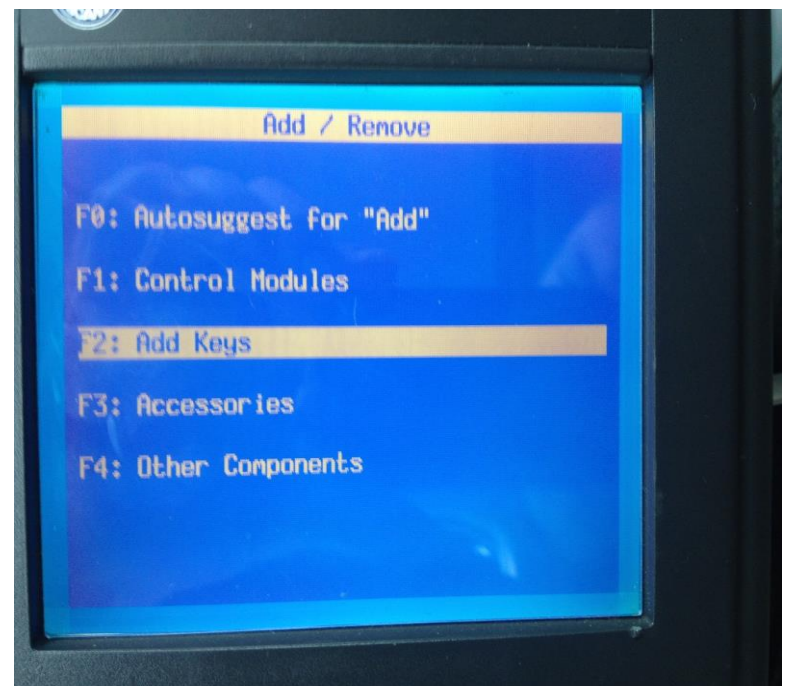
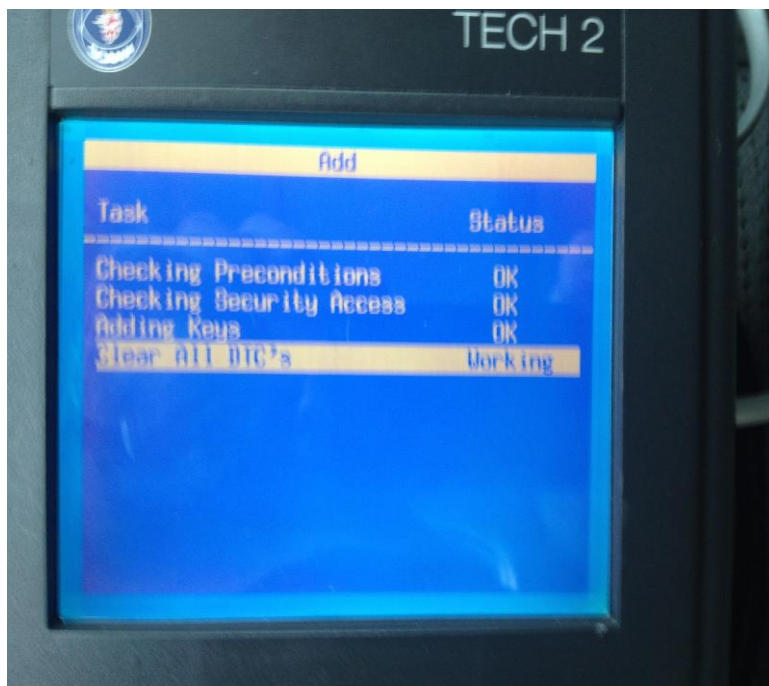
Tech 2 navigation

- Insert a key.
- Turn the key to "ON".



Tech 2 navigation

- Vehicle DTCs are cleared.
- The programming is completed.



Saab 9-5 (9650) Key Programming



Introduction:

- This course will show how to program keys (remote controls) for Saab 9-5 (9650).
- The programming is done with the TIS2WEB SPS application and the MDI interface with USB
- The programming takes about 20 minutes to complete. Always use a battery charger.
- All keys except the one to be programmed must be kept 10 m or more from the car.
- No radio transmitting devices must be inside the car while programming.
- All keys and remotes must be programmed at the same occasion.
- New keys and keys previously used for this vehicle can be programmed.
- There is no need to replace any modules even if all keys are lost.



Preparation

- Have all keys (new keys and keys previously used for this vehicle) at hand.
- Keep MDI and PC outside the car. Connect MDI to DLC and to PC with USB (Not wirelessly). Connect a battery charger.



Preparation

- Place a key to be programmed in the key pocket. All other keys must be more than 10 m away from the car. Ignition must be OFF.
- Make sure there are no radio transmitting devices in the car (mobile phones, other car keys, transponders etc.).



- Turn the parking lights on to keep the data bus awake.

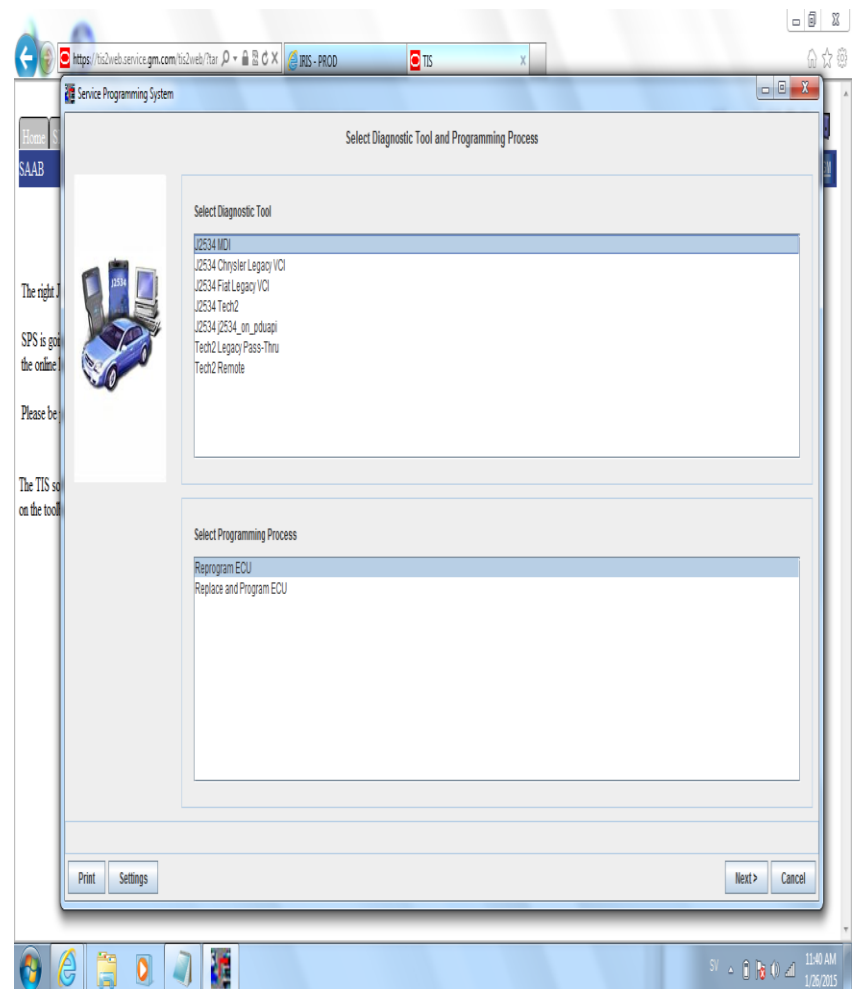


Programming

- Start SPS.
- Disregard of any initial message to turn ignition on.

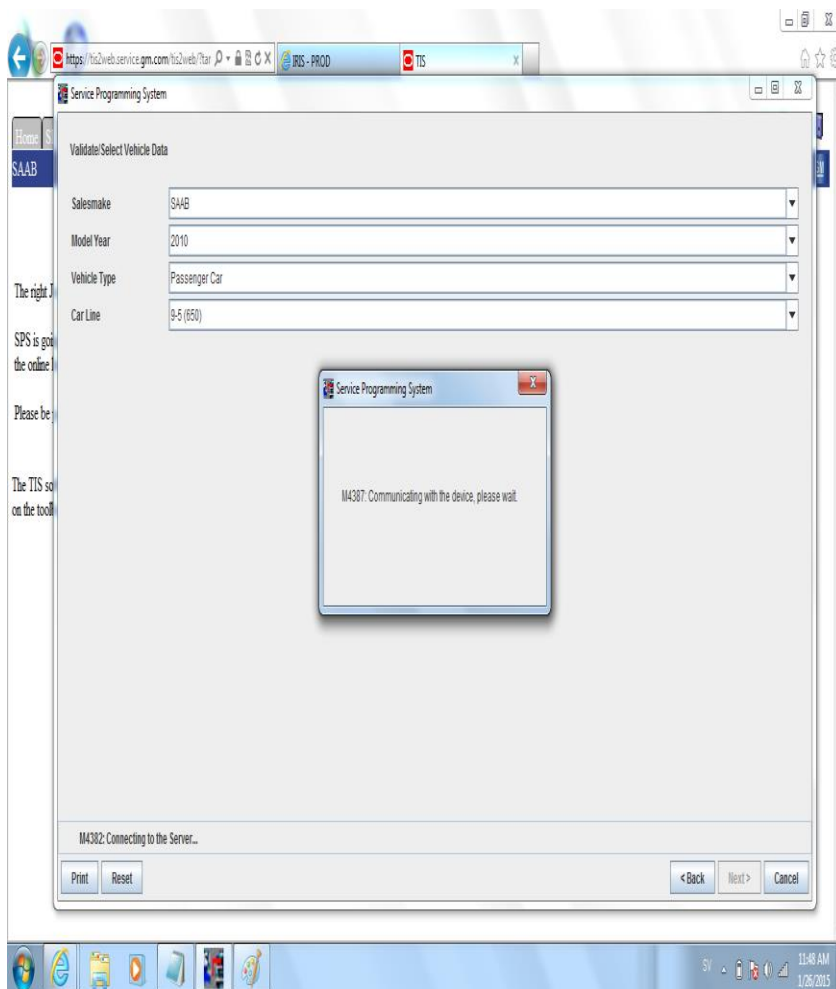


- Select "J2534 MDI" and "Reprogram ECU".

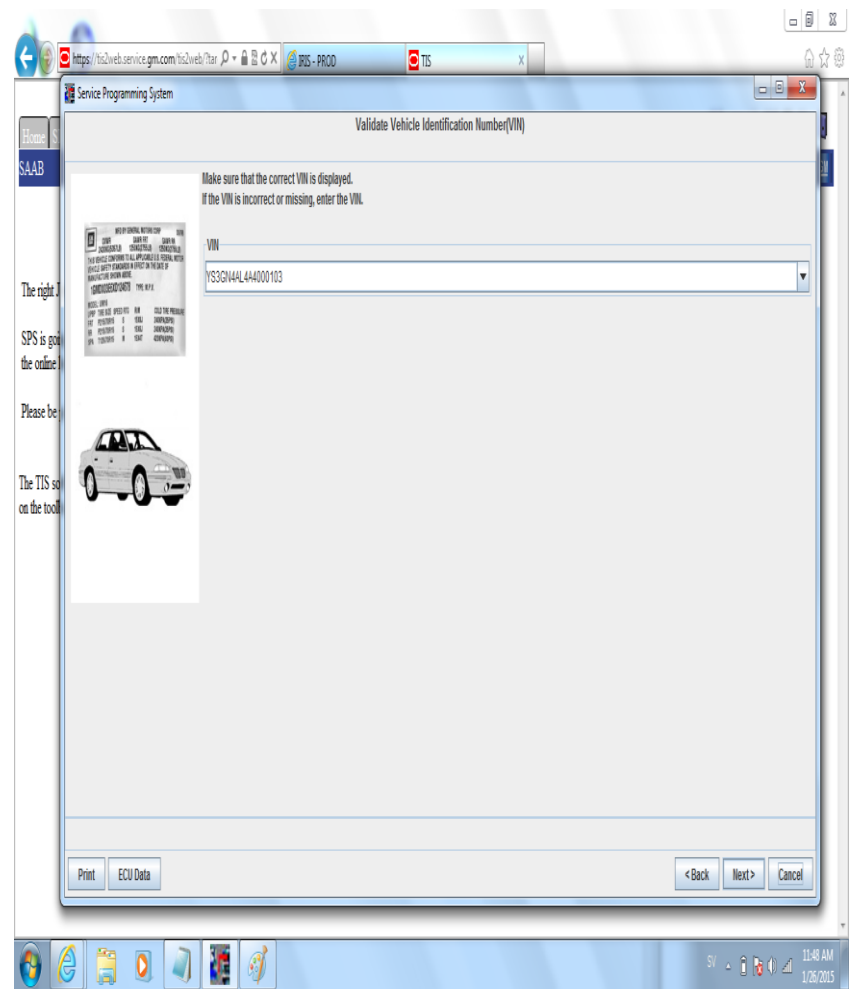


Programming

- Select the correct car.

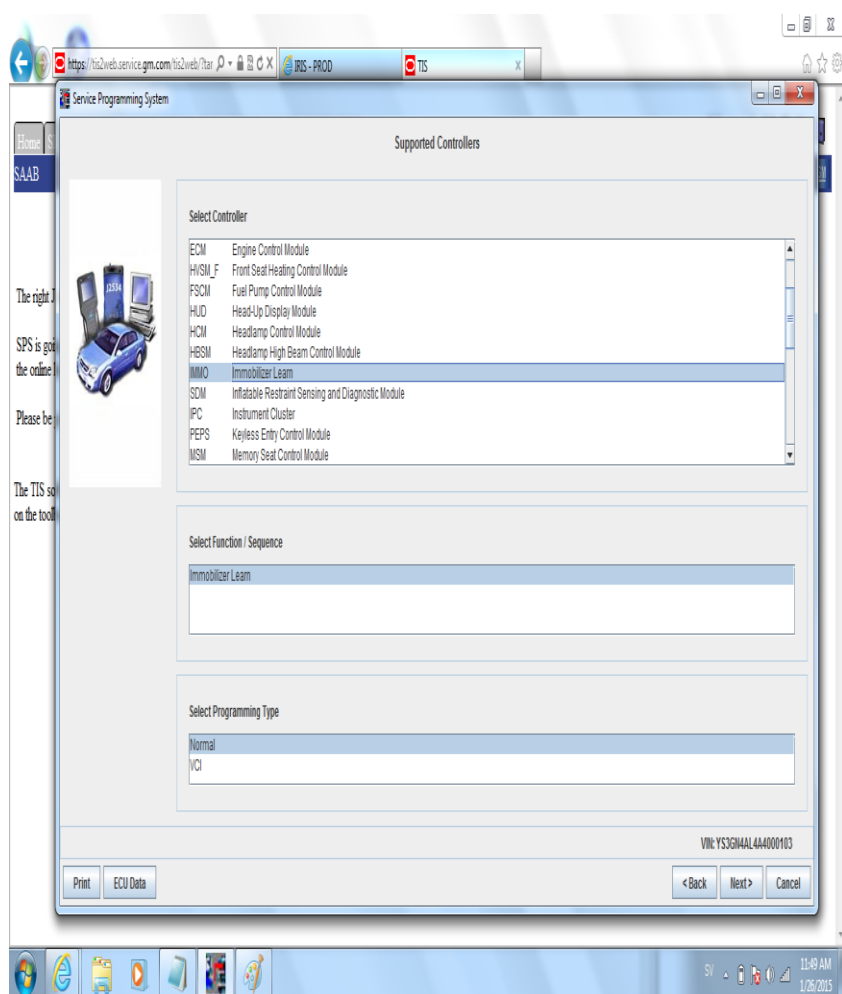


- Verify the VIN number.

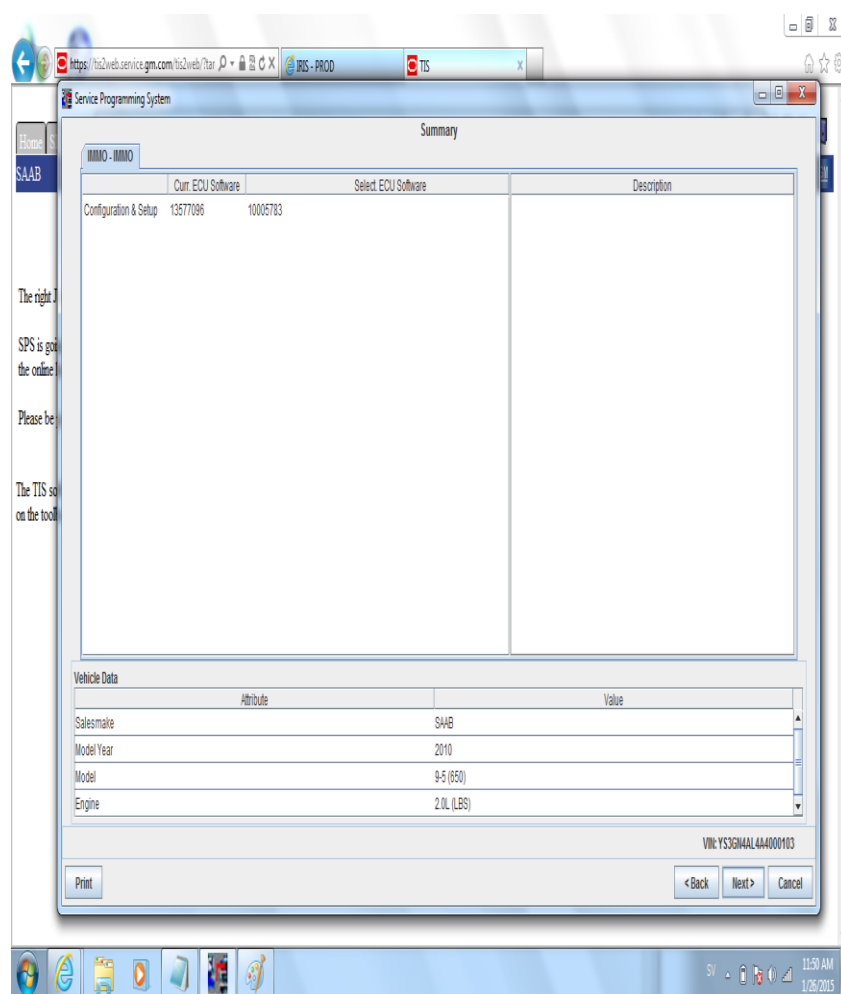


Programming

- Select "Immobilizer Learn".

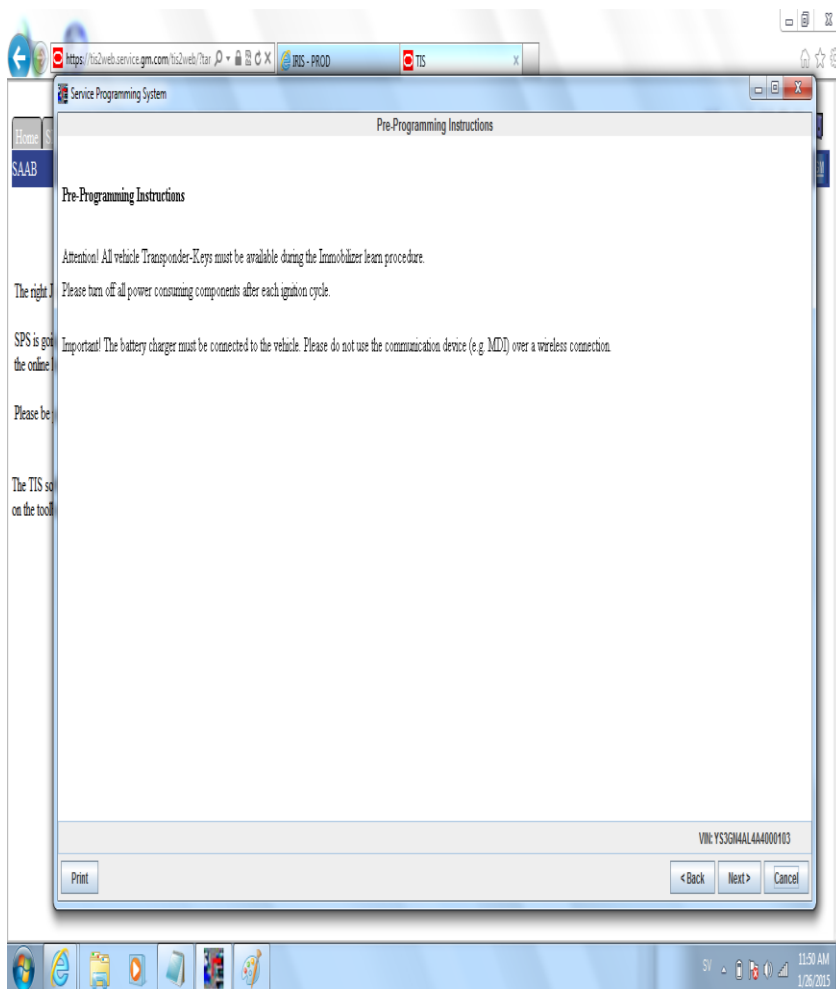


- Press "Next".

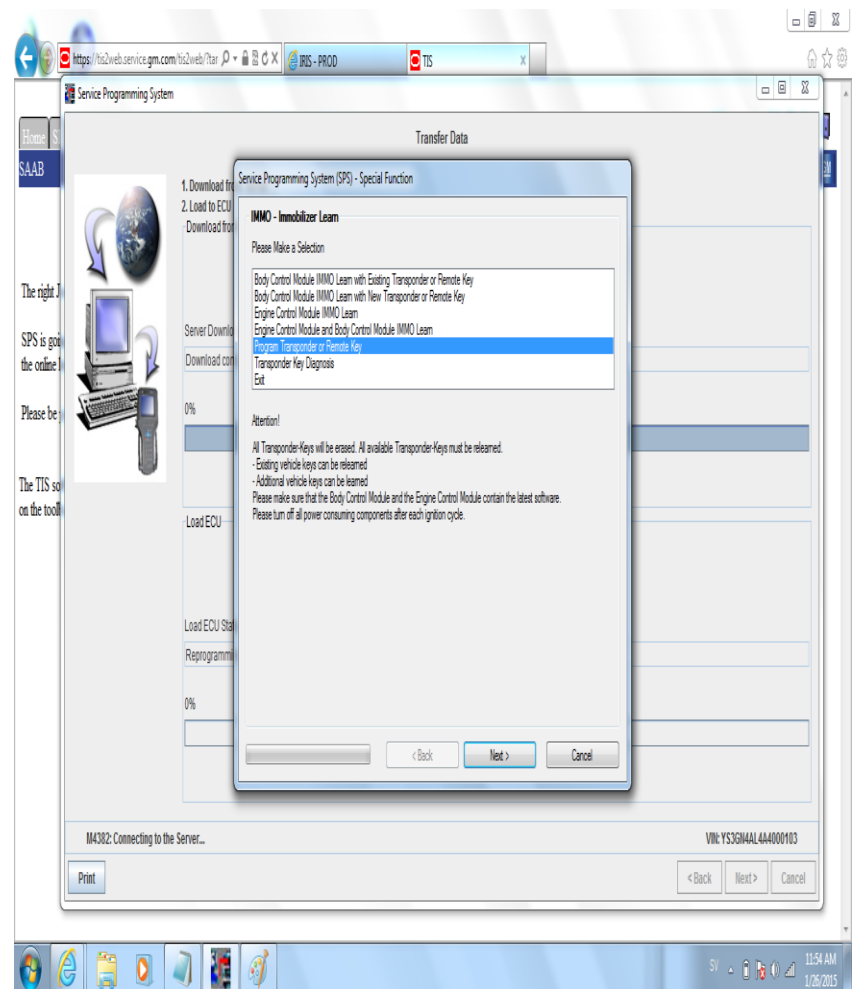


Programming

- Information only. Please read and click "Next" to continue.

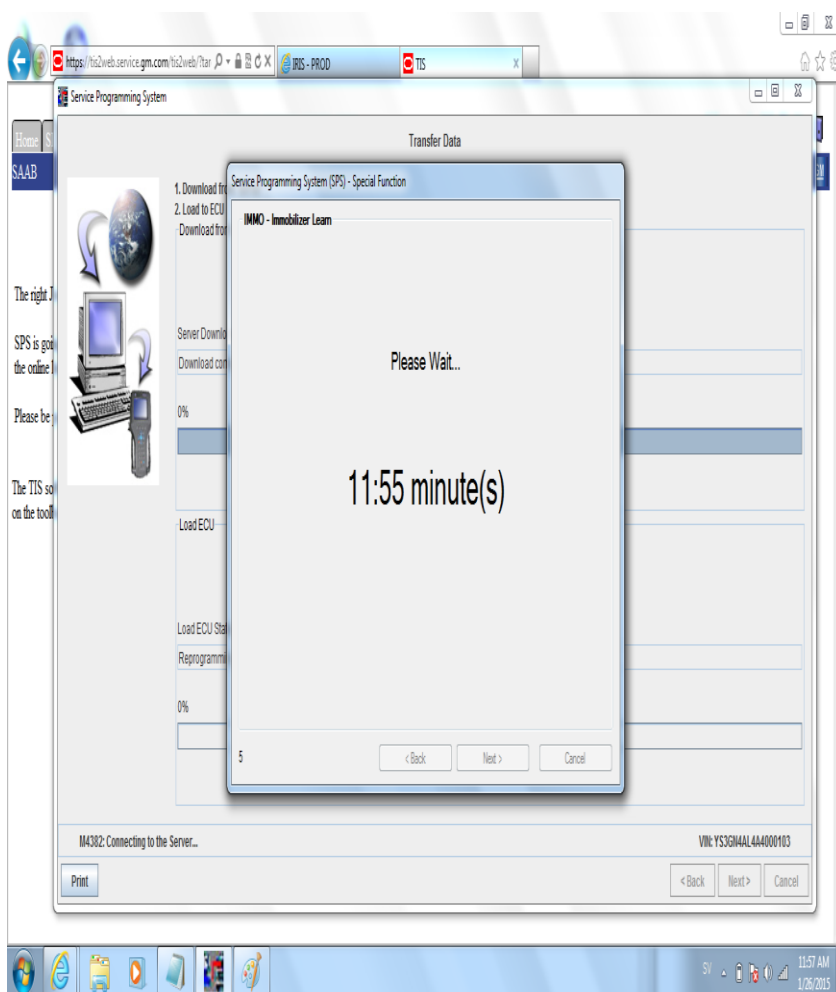


- Select "Program Transponder or Remote Key".

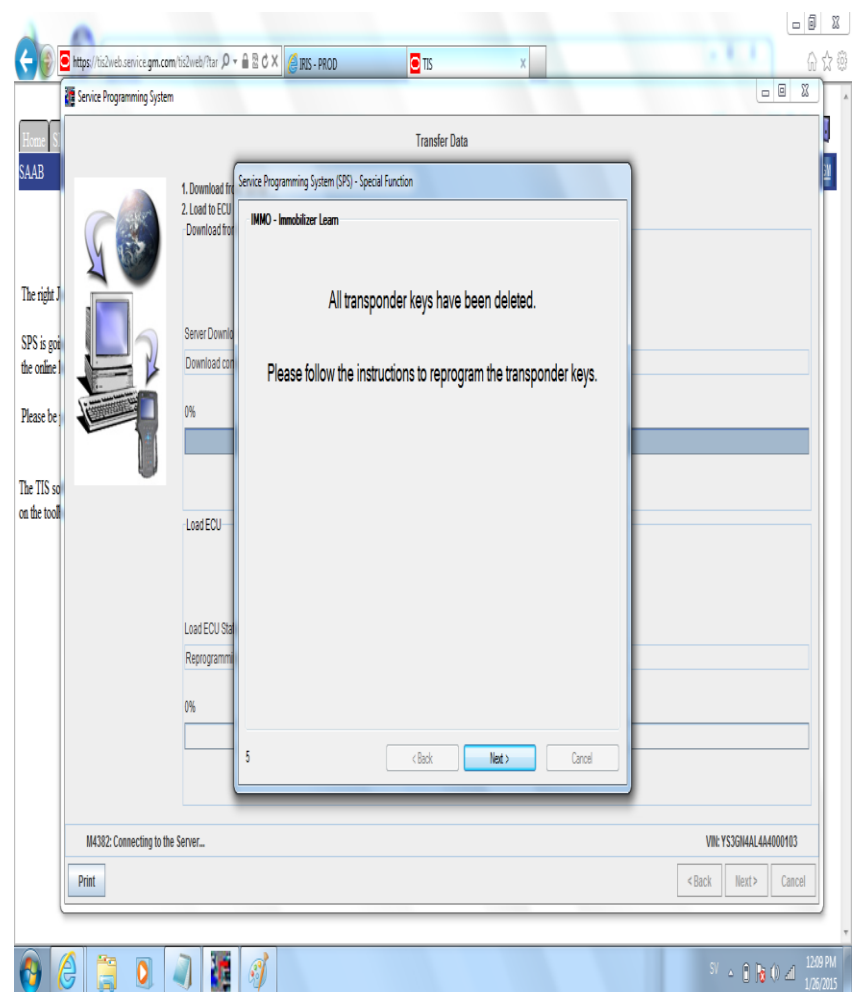


Programming

- Security wait time of 12 minutes.

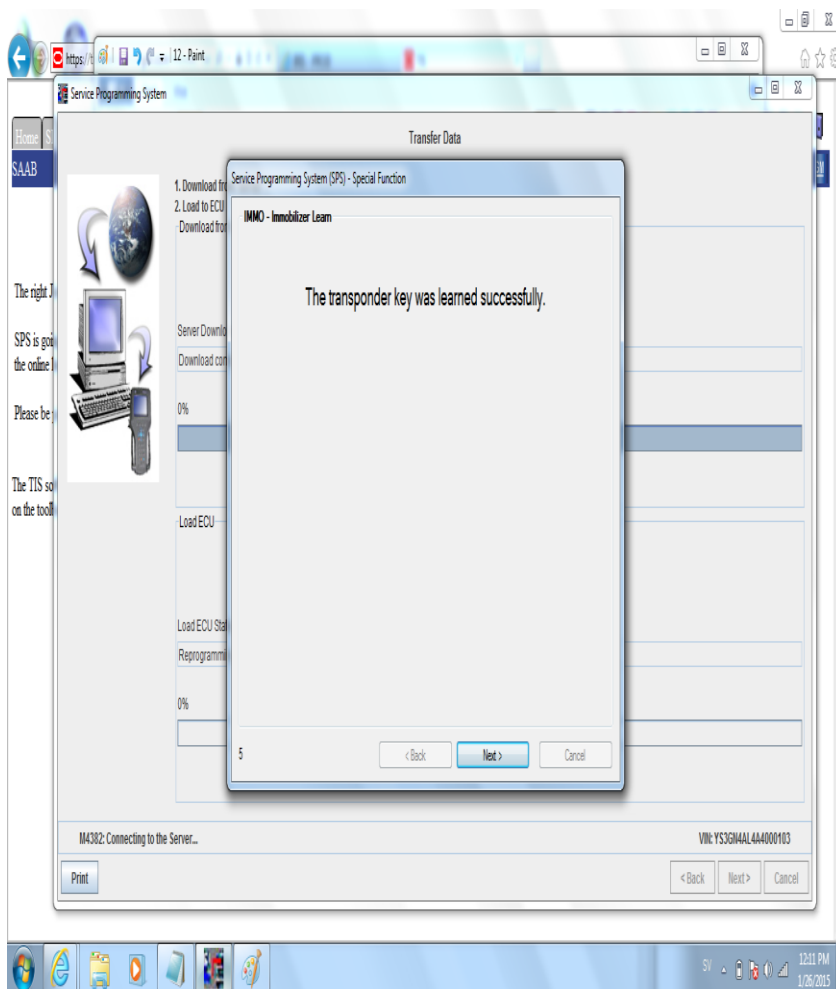


- Transponder key information have been deleted in the control unit.
- Proceed to program the first key.
Note: the first key is already positioned in the key pocket.

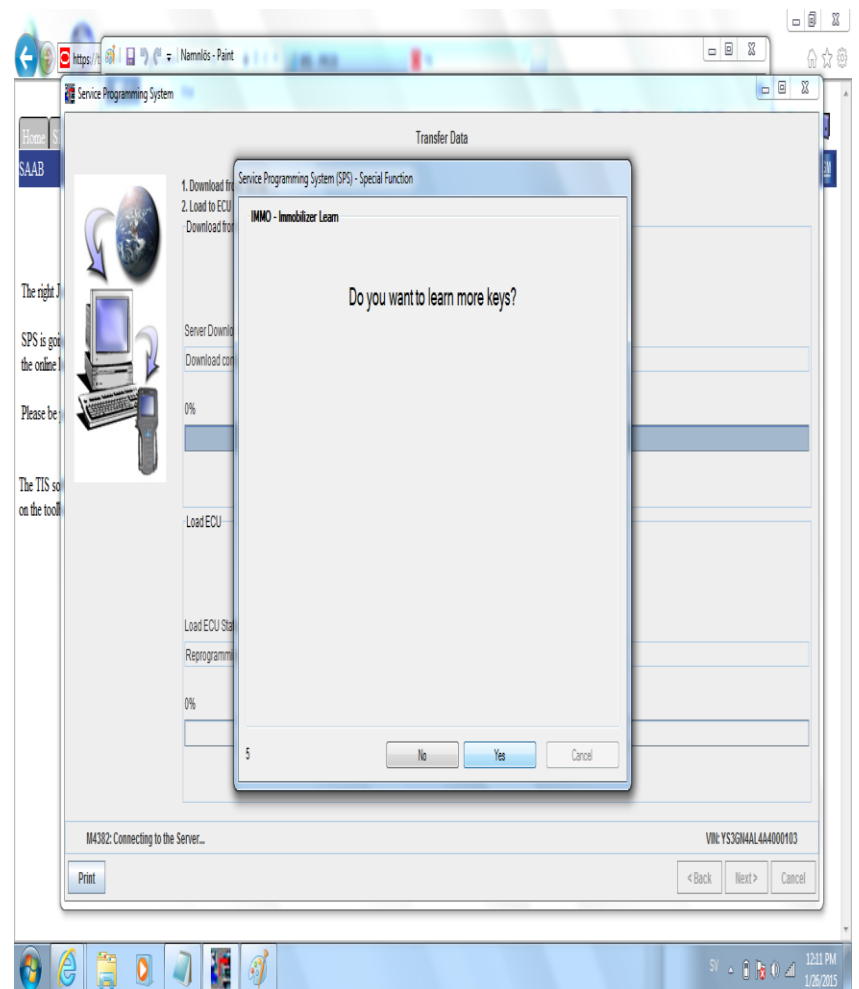


Programming

- First key learned.

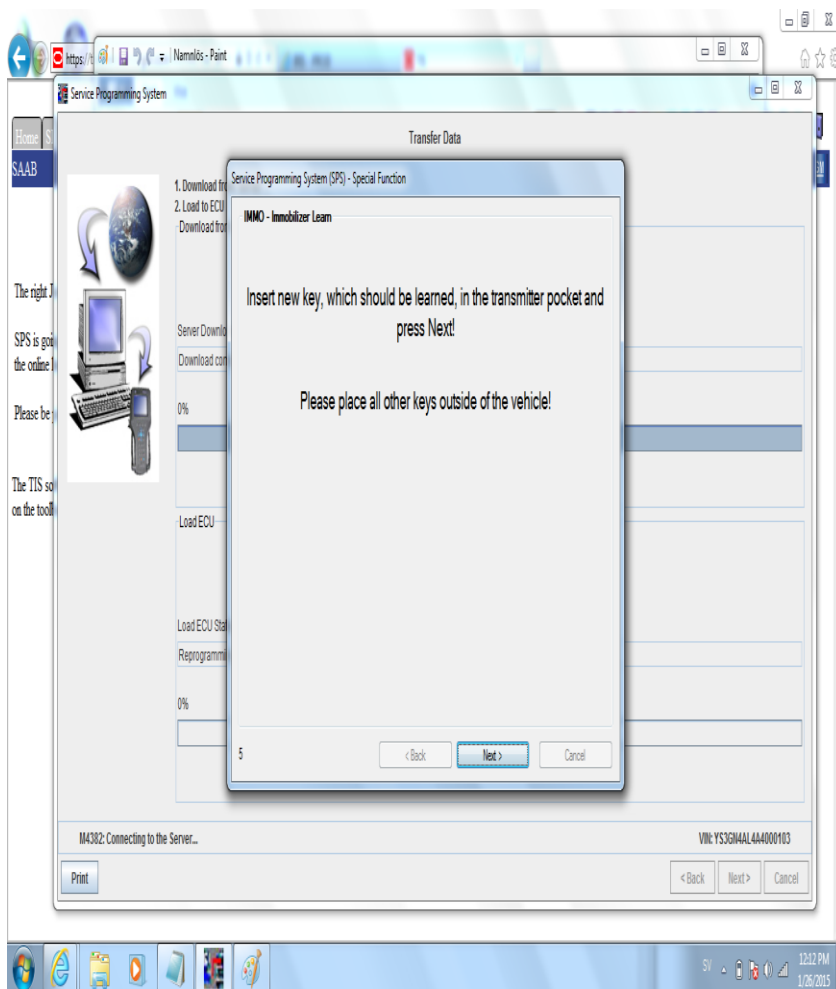


- Select "Yes" if you have more keys to learn.

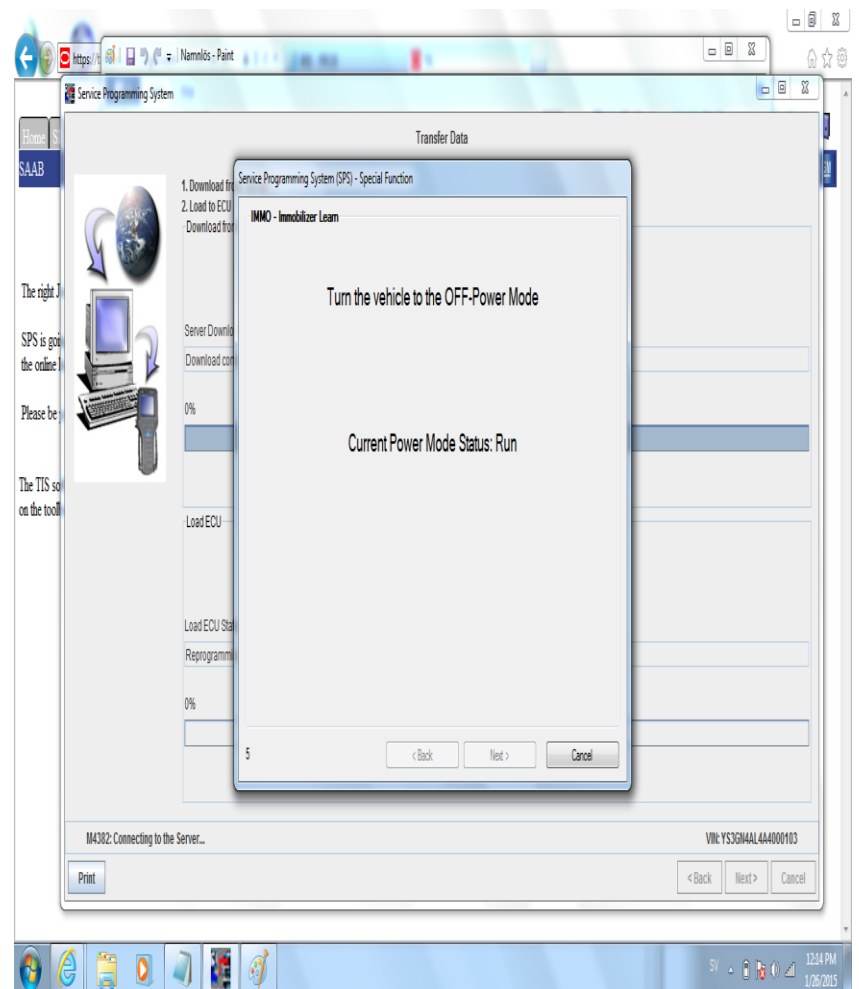


Programming

- Continue to program all keys.



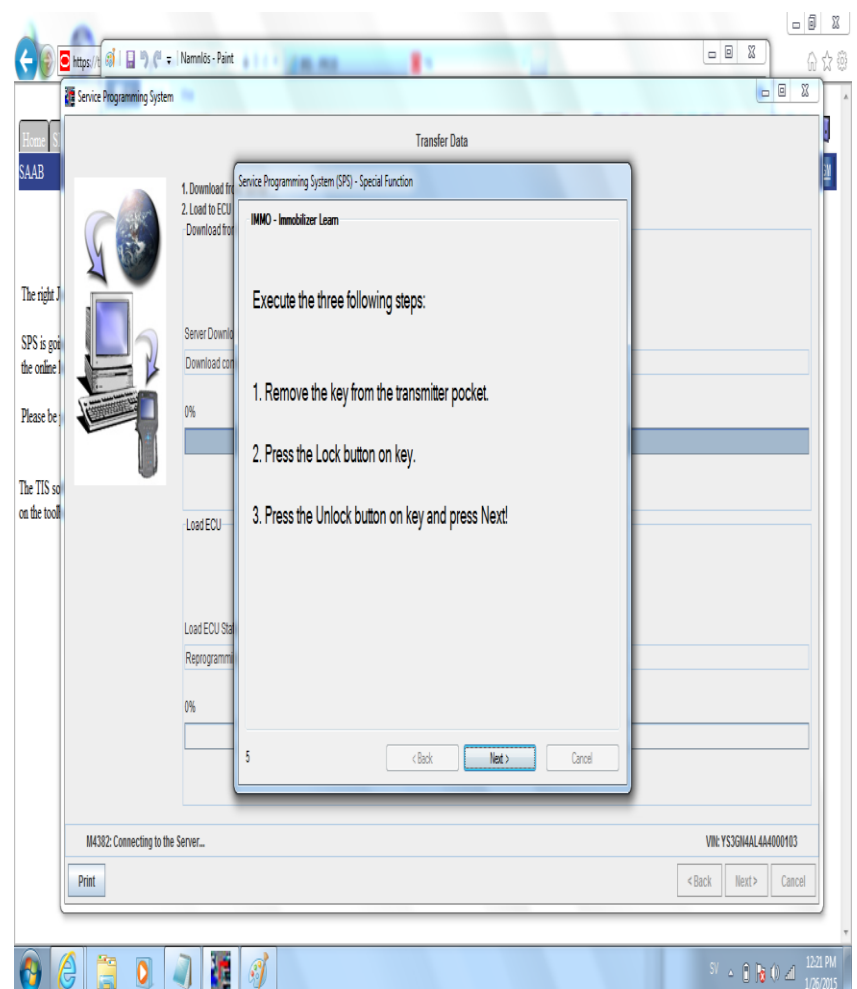
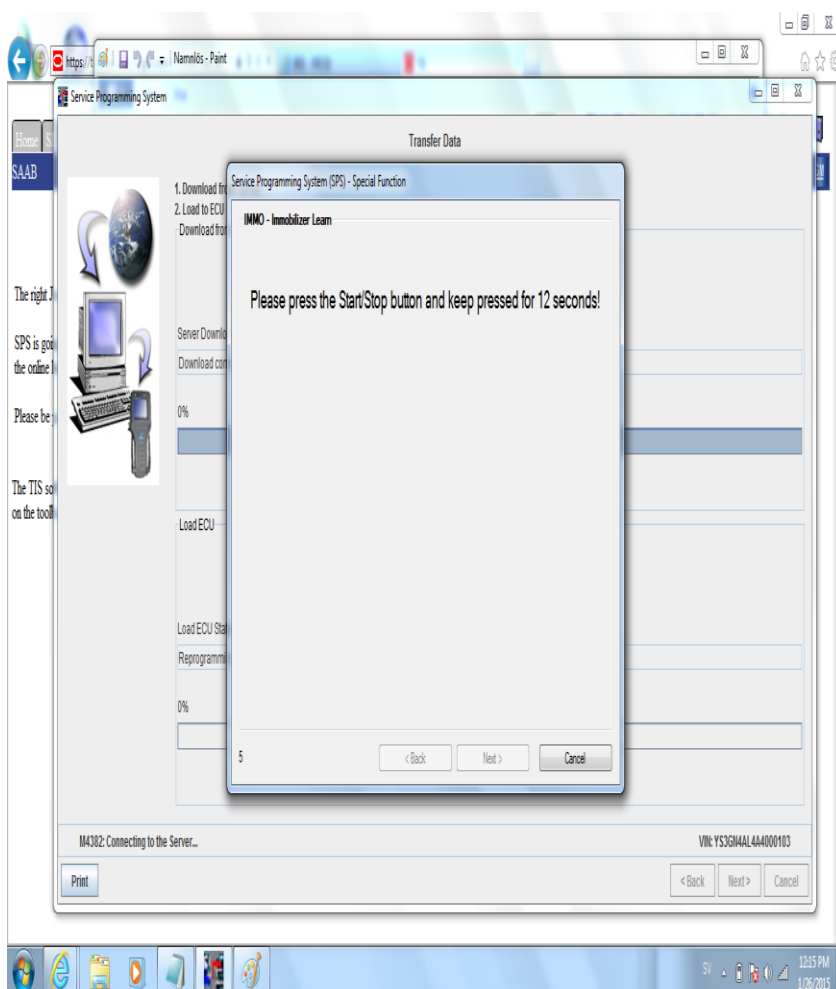
- Ignition OFF when all keys are programmed.



Post Programming Procedures

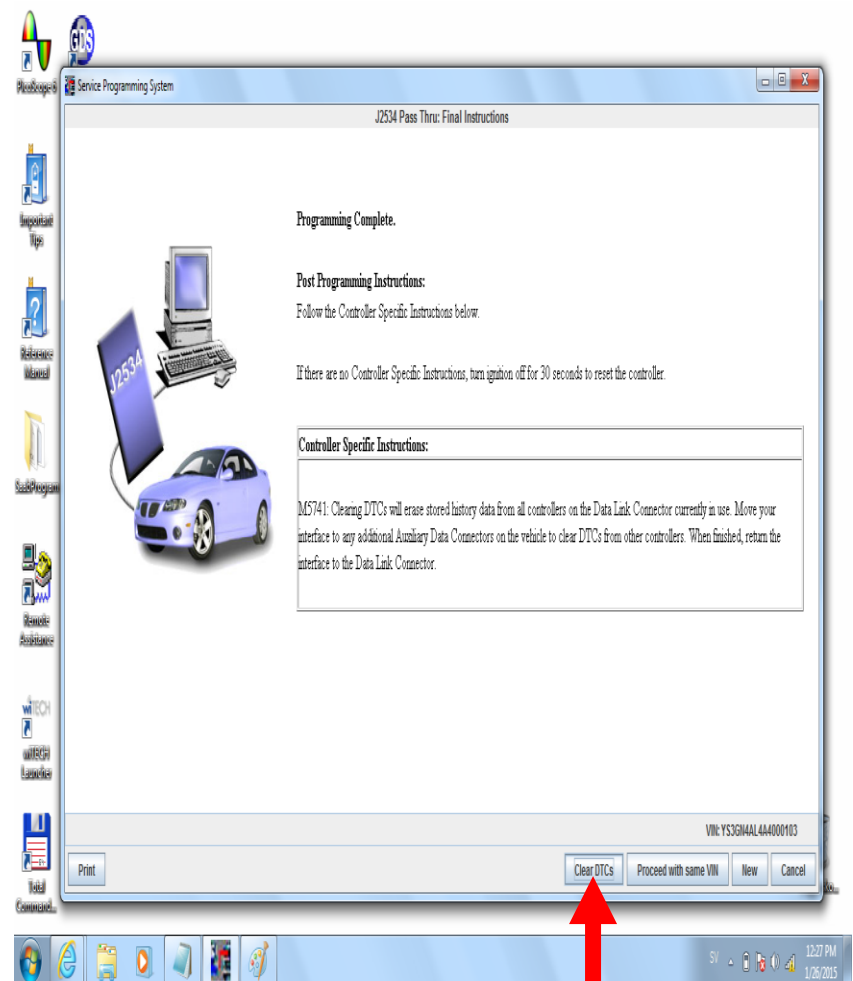
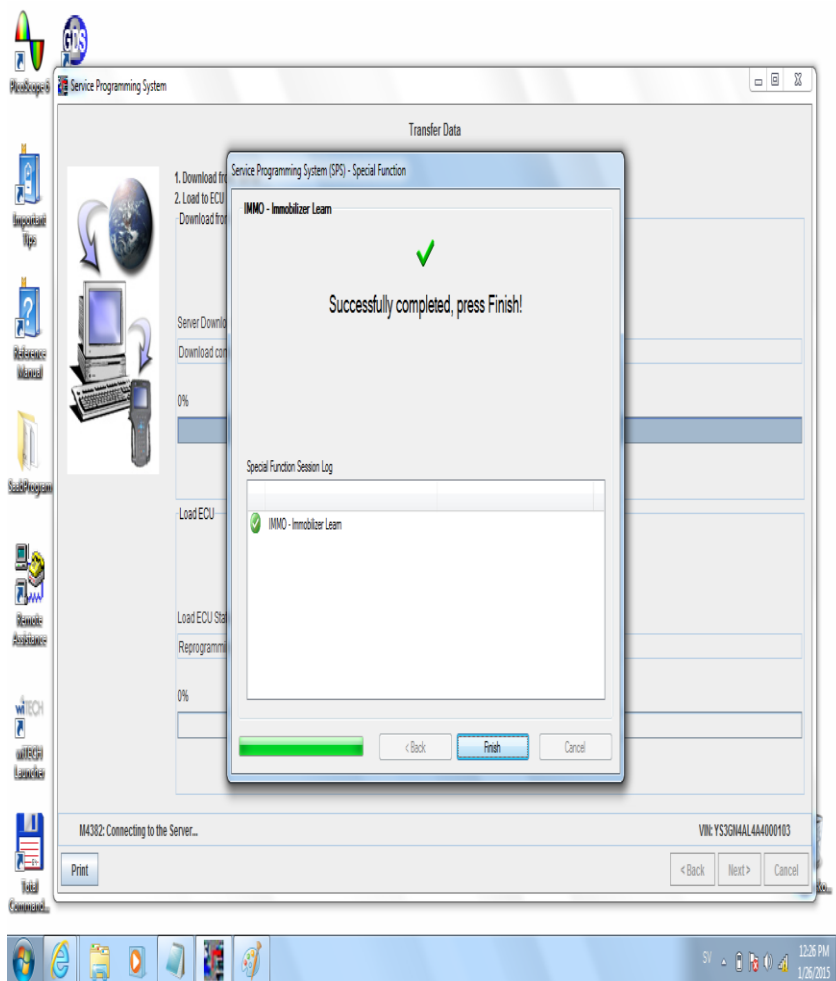
- Press and hold the Start button until ignition goes on.

- Follow the Post Programming instructions. Finish by synchronizing the remote controls.



Post Programming Procedures

- The programming is finished.
- Press and hold the Start button to turn ignition on before clearing all vehicle DTCs.
- Switch off the lights.





The keys should be programmed.